

# ALD08 Series 8.4" LCD Customer Display

acode®

vivid colours reliable user friendly

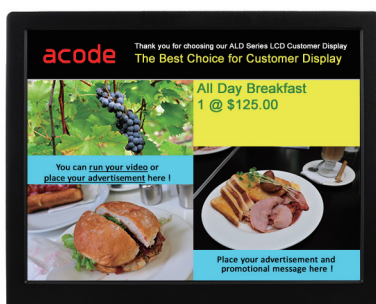
This Window-Based LCD Graphic Display has outstanding display quality. It is easy to use and maintain. More importantly, it can support a wide range of user applications and different multimedia presentation formats including videos, html, flash, and animation.



Wall Mount  
ALD08V 8.4" LCD Display VGA  
ALD08U 8.4" LCD Display USB  
ALD08VT 8.4" LCD Display VGA w/Touchscreen

	ALD08U (VGA to USB)	ALD08V (VGA)	ALD08VT (VGA w/Touchscreen)
Display Size	8.4"	8.4"	8.4"
Display Area	170.4mm x 127.8 mm	170.4mm x 127.8 mm	170.4mm x 127.8 mm
Optimal Resolution	800 * 600	800 * 600	800 * 600
Brightness	180 cd/m <sup>2</sup> (typ)	230 cd/m <sup>2</sup> (typ)	230 cd/m <sup>2</sup> (typ)
Contrast Ratio	600:1 (typ)	600:1 (typ)	600:1 (typ)
Response Time	8 ms (typ)	8 ms (typ)	8 ms (typ)
Viewing Angle	75 / 75 / 50 / 60 (L/R/U/D)	75 / 75 / 50 / 60 (L/R/U/D)	75 / 75 / 50 / 60 (L/R/U/D)
Input Video Signal	USB B Type	D-sub 15 pins	D-sub 15 pins
Power Consumption	2.5W max.	6W	6W
Power Supply	DC 5V +/- 10%	DC 12V +/- 10%	DC 12V +/- 10%
Input Frequency	H: 31.5-60.2kHz ; V: 56.3Hz -75.0Hz	H: 31.5-60.2kHz ; V: 56.3Hz -75.0Hz	H: 31.5-60.2kHz ; V: 56.3Hz -75.0Hz
Temperature	Operating : 0°C~40°C ; Storage : -10°C ~50°C	Operating : 0°C~40°C ; Storage : -10°C ~50°C	Operating : 0°C~40°C ; Storage : -10°C ~50°C
Humidity	Operating : 20%~80% ; Storage : 10% ~90%	Operating : 20%~80% ; Storage : 10% ~90%	Operating : 20%~80% ; Storage : 10% ~90%
Weight	680g (net)	680g (net)	680g (net)
Approvals	CE, FCC	CE, FCC	CE, FCC
Wall Mount Type	VESA Mount Hole 75*75mm	VESA Mount Hole 75*75mm	VESA Mount Hole 75*75 mm
Touchscreen	---	---	4W Resistive Taiwan Touch
Colour	Black	Black	Black

ALD08U-MP  
supports multimedia



ALD08U-VP  
supports slide show

